

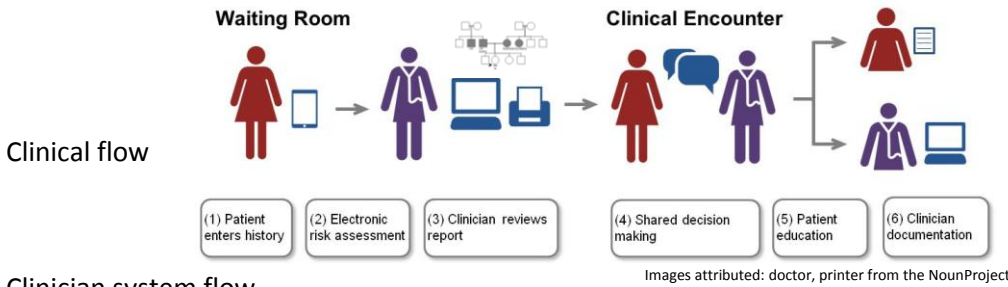
# Quick Start Guide

**Summary:** Document provides tips for new users who are exploring features and functions.

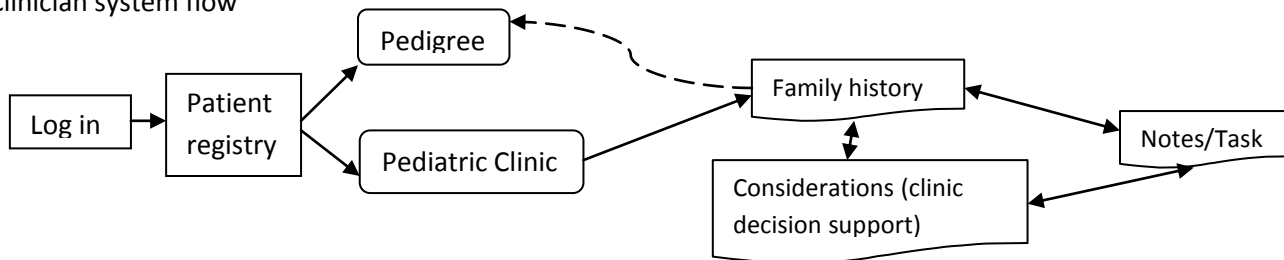
## Getting started

Username: 'pediatric'; Default password: 'pediatric' for both the clinician interface and tablet survey.

## Workflow



## Clinician system flow



Create list of appointments by entering patients' basic demographic information into the 'patient registry'. (List of patients will appear in separate 'Tablet Core' application.) Select a patient and move to interactive Pedigree mode to update data or through the Pediatric Clinic to update data in a table or via the pedigree. While in Risk Clinic mode, you can also move between tabs to review/re-run clinical decision support, create documents, notes, tasks for your patient.

## Diseases with Clinical Decision Support

- |                            |                              |                          |                          |
|----------------------------|------------------------------|--------------------------|--------------------------|
| • Allergies                | • Schizophrenia              | • Celiac disease         | Mendelian:               |
| • Asthma                   | • Suicide                    | • IBD or Crohn's         |                          |
| • Eczema                   | • Congenital heart defect    | • Cancer                 |                          |
| • Intellectual disability  | • Congenital hip dislocation | • Cardiovascular disease |                          |
| • Autism spectrum disorder | • Congenital kidney disease  | • Stroke                 |                          |
| • ADHD                     | • Deafness                   | • High cholesterol       |                          |
| • Depression               | • Seizures                   | • High blood pressure    |                          |
| • Bipolar disorder         | • Thyroid disease            | • Diabetes               |                          |
| • Anxiety disorder         |                              | • Sudden death, SIDs     |                          |
| • Substance abuse          |                              | • Bleeding disorders     |                          |
|                            |                              |                          | • Hemophilia             |
|                            |                              |                          | • Sickle cell disease    |
|                            |                              |                          | • Thalassemia            |
|                            |                              |                          | • Thrombophilia          |
|                            |                              |                          | • Von Willebrand disease |
|                            |                              |                          | • CF                     |
|                            |                              |                          | • Fragile X              |

## Learn more

Additional documentation is available to help:

- Implementation Fact Sheet
- HOW TO get started with your IT department (Installation fact sheet)

Technical support is available through Hughes RiskApps, LLC